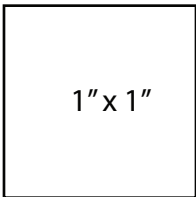


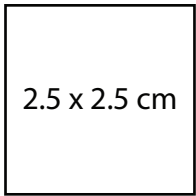


Pleated Patch Pocket

Sewing Pattern
One Size Only
Make 2 Mirrored Pockets



1" x 1"

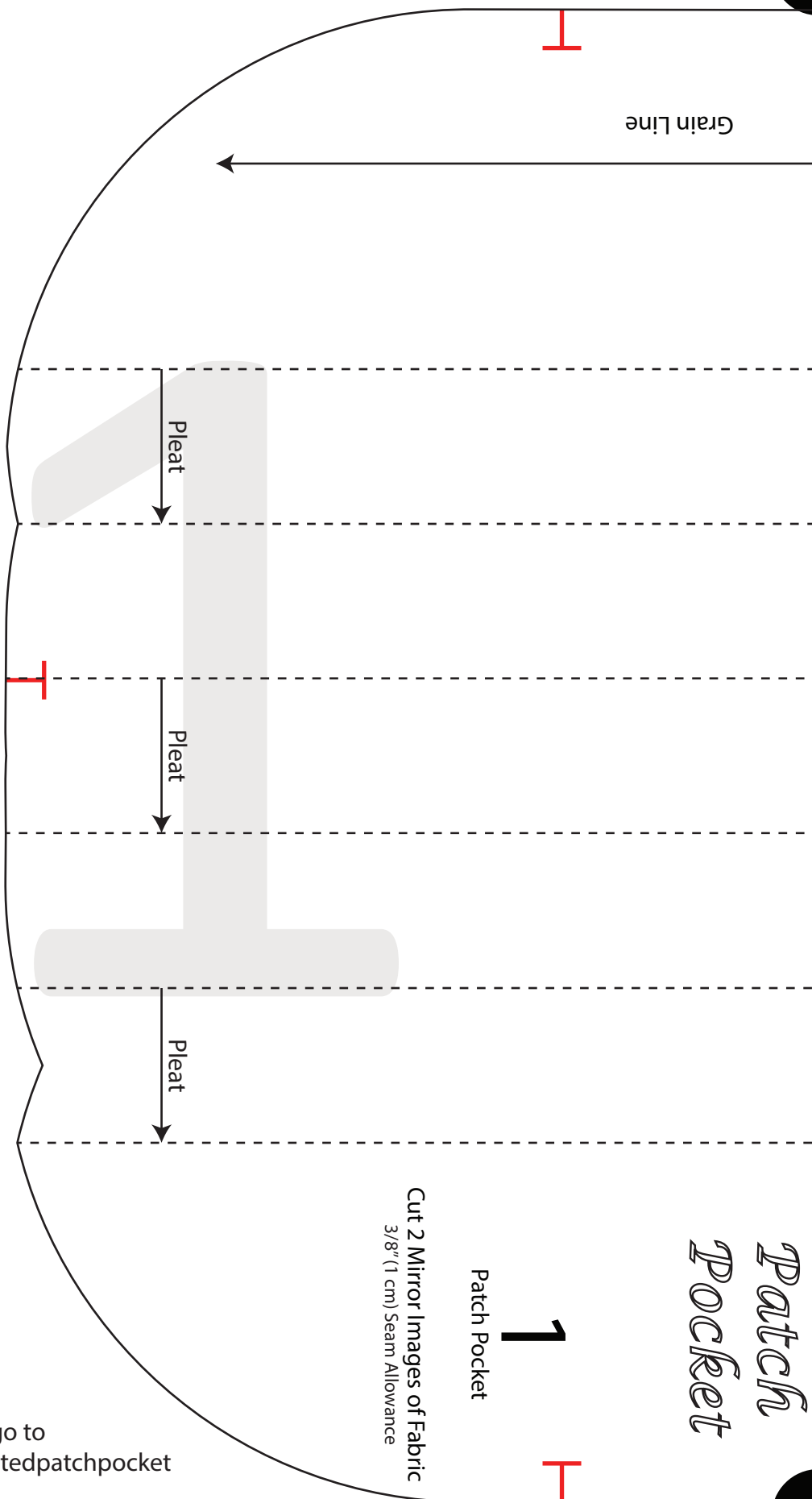


2.5 x 2.5 cm

Be sure to measure the 1" or 2.5 cm scaling square before cutting your fabric!

© 2016 by Itch to Stitch. All rights reserved. No part of this document may be reproduced or transmitted in any form or by any means, electronic, mechanical, photocopying, recording, or otherwise, without prior written permission of Itch to Stitch.

For instructions, go to <http://itch-to-stitch.com/pleatedpatchpocket>



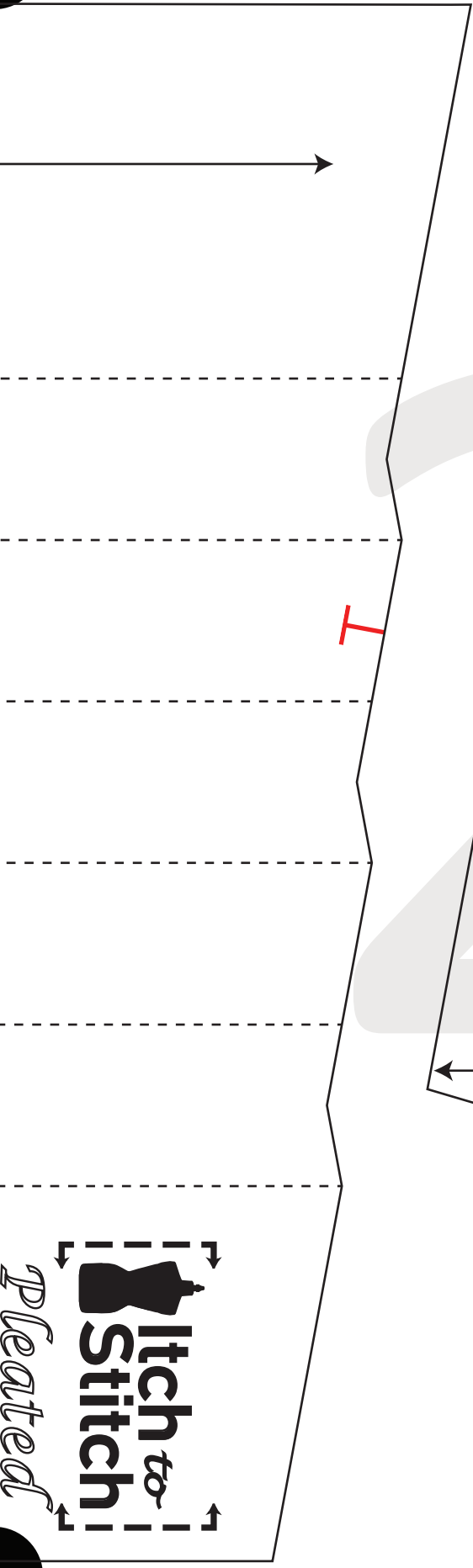
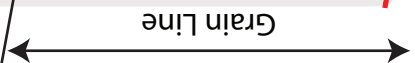
**Itch to
Stitch**
*Pleated
Patch
Pocket*

2

Patch Pocket Facing

Cut 2 Mirror
Images of Fabric
3/8" (1 cm) Seam Allowance

Grain Line



**Itch to
Stitch**
Pleated



Grain Line

4

Patch Pocket Facing's Interfacing

Cut 2 Mirror Images of Interfacing
3/8" (1 cm) Seam Allowance



Grain Line

3

Patch Pocket Lining

Cut 2 Mirror Images of Lining
3/8" (1 cm) Seam Allowance